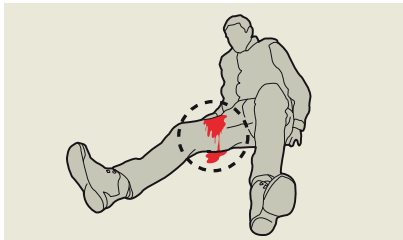


HOW TO CONTROL LIFE-THREATENING BLEEDING WITH CELOX™ GAUZE

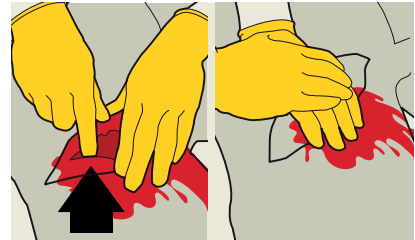
Uncontrolled haemorrhage is responsible for over 35% of pre-hospital deaths¹



1. Identify catastrophic haemorrhage



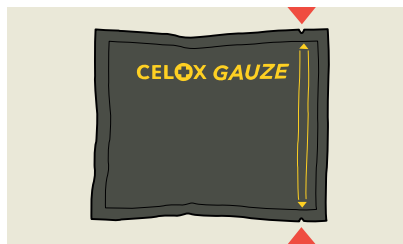
2. Expose the wound - cut or tear the clothing covering the wound



3. Identify the point of bleeding and apply direct pressure



4. Swab excess blood



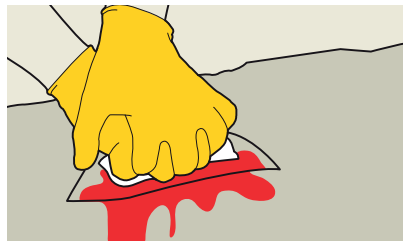
5a. Pack onto source of bleeding - it has tear notches, at the right corners



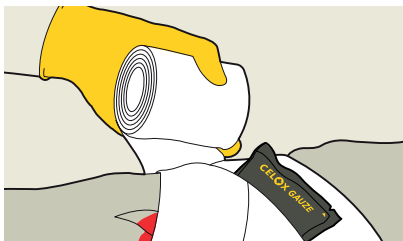
5b. Pack onto source of bleeding - open pack, take one end of gauze whilst still applying pressure



5c. Pack onto source of bleeding - tightly pack the unfolding Celox Gauze directly to the source of bleeding, feeding in the Celox Gauze until the wound is filled above skin level. Excess gauze can be cut or torn



6. Apply firm pressure for 3 minutes or until bleeding stops



7. Secure with a dressing to maintain pressure and discard any remaining Celox Gauze



8. Transfer the casualty to the next stage of care

THINK ABOUT CATASTROPHIC HAEMORRHAGE

<C> = Catastrophic Haemorrhage

A = Airway

B = Breathing

C = Circulation

D = Disability

E = Exposure

For full details, warnings and removal instructions refer to manufacturer's instructions for use.

1. Kauvar, D.S., Lefering, R., and Wade, C.E. (2006) Impact of hemorrhage on trauma outcome: an overview of epidemiology, clinical presentations, and therapeutic considerations. *J Trauma* 60, S3-11. Copyright © 2021 Medtride Products Ltd. CELOX™ is a trademark of Medtride Products Ltd. All rights reserved.