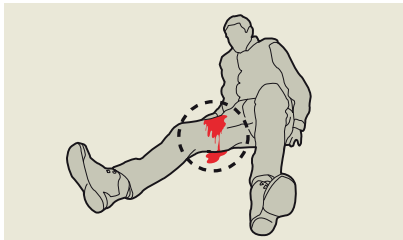


HOW TO CONTROL LIFE-THREATENING BLEEDING WITH CELOX™ GRANULES

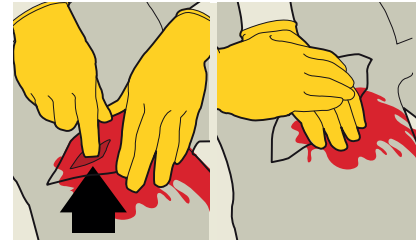
Uncontrolled haemorrhage is responsible for over 35% of pre-hospital deaths¹



1. Identify catastrophic haemorrhage



2. Expose the wound – cut or tear the clothing covering the wound



3. Identify the point of bleeding and apply direct pressure



4. Swab excess blood



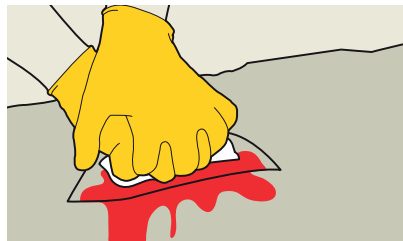
5a. Pour onto source of bleeding – it has two tear notches, one at each top corner



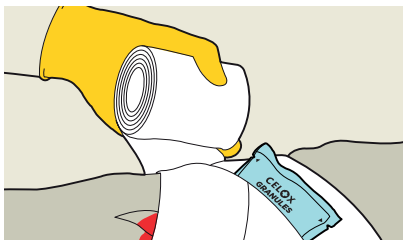
5b. Pour onto source of bleeding – open pack whilst still applying pressure



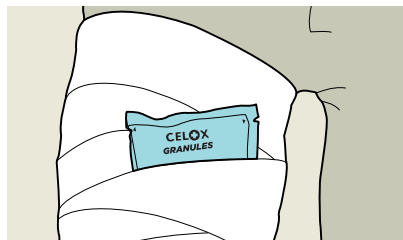
5c. Pour onto source of bleeding – immediately pour entire contents of pouch to fill the wound above skin level. Additional packs may be used if necessary.



6. Cover and apply firm direct pressure for 5 minutes or until bleeding stops



7. Secure with a dressing to maintain pressure and discard any remaining Celox Granules



8. Transfer the casualty to the next stage of care

THINK ABOUT CATASTROPHIC HAEMORRHAGE

<C> = Catastrophic Haemorrhage

A = Airway

B = Breathing

C = Circulation

D = Disability

E = Exposure

For full details, warnings and removal instructions refer to manufacturer's instructions for use.

1. Kauvar, D.S., Lefering, R., and Wade, C.E. (2006) Impact of hemorrhage on trauma outcome: an overview of epidemiology, clinical presentations, and therapeutic considerations. J Trauma 60, S3-11. Copyright © 2021 Medtrude Products Ltd. CELOX™ is a trademark of Medtrude Products Ltd. All rights reserved.